

Conference table_C1

cutouts and data connection panels not included



C1-240 for 6 - 8 people	Type / Design Dimension in cm	Color / Surface	Item number	Sales price
	Rounded boat shape 240 x 100/120 x 74 (W x D x H)	White Table top arctic white laminate, edge, substructure and legs arctic white structure lacquer.	10227	5.580 Euro
	Table top 29mm thick, chamfered edge, 1-piece table top, Substructure made up of 2 Holzmedia elliptical legs.	Oak - white Table top and edge oak veneer, ubstructure and legs arctic white structure lacquer.	10228	5.580 Euro
		Walnut - black Table top and edge walnut veneer, ubstructure and legs lava black structure lacquer.	10229	5.800 Euro
C1-320 for 8 - 10 people	Type / Design Dimension in cm	Color / Surface	Item number	Sales price
	Rounded boat shape 320 x 120/140 x 74 (W x D x H)	White Table top arctic white laminate, edge, substructure and legs arctic white structure lacquer.	10230	7.440 Euro
	Table top 29 mm thick, chamfered edge, 2-pieces table top, Substructure made up of 2 Holzmedia elliptical legs.	Oak - white Table top and edge oak veneer, ubstructure and legs arctic white structure lacquer.	10231	7.440 Euro
		Walnut - black Table top and edge walnut veneer, ubstructure and legs lava black structure lacquer.	10232	7.760 Euro
C1-480 for 12 - 14 people	Type / Design Dimension in cm	Color / Surface	Item number	Sales price
	Rounded boat shape 480 x 120/140 x 74 (W x D x H)	White Table top arctic white laminate, edge, substructure and legs arctic white structure lacquer.	10233	12.520 Euro
	Table top 29mm thick, chamfered edge, 2-pieces table top, Substructure made up of 3 Holzmedia elliptical legs.	Oak - white Table top and edge oak veneer, ubstructure and legs arctic white structure lacquer.	10234	12.520 Euro
		Walnut - black Table top and edge walnut veneer, ubstructure and legs lava black structure lacquer.	10235	13.040 Euro

Transport, set up and instruction by Holzmedia

on request

The color shades of the structure lacquer finishes and veneers may be adapted for an additional charge upon request.

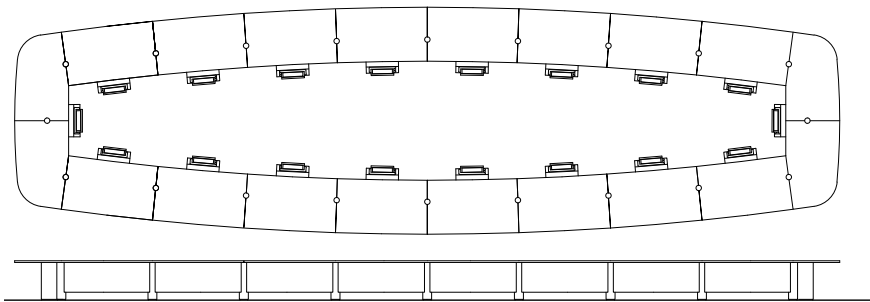
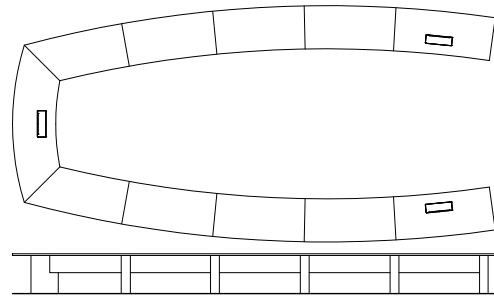
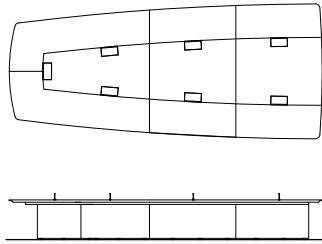
on request

Custom conference table installation_C3

custom and free planable concerning dimension, substructure, materiality and technology integration etc.



Examples:



Further examples / references for custom conference tables you can find under www.holzmedia.de/de/smart-planning.

Options conference table_C1 as well as custom conference table installation_C3

Options	Color / Surface	Item number	Sales price
Cutout data connection panel For free positioning according to specification.		10204	190 Euro
Ferrule for cable routing Ø 20 mm For free positioning, includes milled hole in top and installation.	stainless steel	10205	90 Euro
Ferrule for cable Ø 60 mm For free positioning, includes milled hole in top and installation.	stainless steel look	10206	120 Euro
Milled groove Qi Wireless Charger Milled groove on underside of table can be freely positioned.		10207	90 Euro
Custom media flaps or rail as well as cable channels in the substructure.			on request