

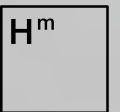
Holzmedia @ International Industrial Group

Referencereport 1 - 2017
Komatsu Germany GmbH



In cooperation with

CANCOM



Holzmedia

Media furniture for complex communication tasks – top-grade design and functionality



Project requirements:

Komatsu Germany GmbH is part of the international, Japanese-based Komatsu corporation, one of the world's leading manufacturers of construction equipment. The challenge for the new building of the technology center in Düsseldorf lay in implementing a multi-layered concept of different communication tasks in harmony with the modern architecture of the building.

From a video wall in the lobby and different-sized conference and meeting rooms to a special telepresence room. The technological design and the project management was carried out by CANCOM GmbH, Langenfeld. They chose Holzmedia as competent partner for the media furniture, in order to satisfy the customer's high expectations for obtaining a solution with representative appeal.



Slim Video wall with 4 x 55" displays, perfectly integrated into the highly representative lobby.

Large conference and training room – with mobile, height-adjustable Media furniture_S1 XL and an individual module for wall placement of the videoconference camera below a large projection screen.



“

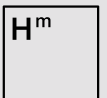
Holzmedia media furniture is a perfect complement to the overall appearance of our new building. And it is a great support for the distinct functions of the different rooms. This becomes very clear when doing interactive work on our new touch-screen displays or professional videoconferencing.

We are excited about the final result!!”



Kai Schychowski

General Manager ICT,
Komatsu Germany GmbH



Holzmedia



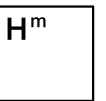
Mobile, height-adjustable Media furniture_S1 XL, each with interactive 84" display. For presentation and training purposes in two different rooms.



Height-adjustable Media furniture_S1 XL, wall-mounted, with 84" touch-screen display



wall-mounted Display column_W7 L, with 75" display



Holzmedia

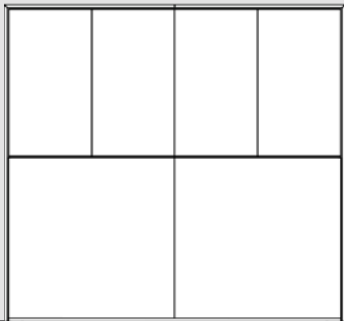
Telepresence room with customized Media column_W8 M³ for the VC-system and three 65" displays.

Facing an optimally curved Conference table_C12 for 6 people, with cable routing module.

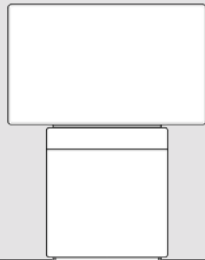


Holzmedia

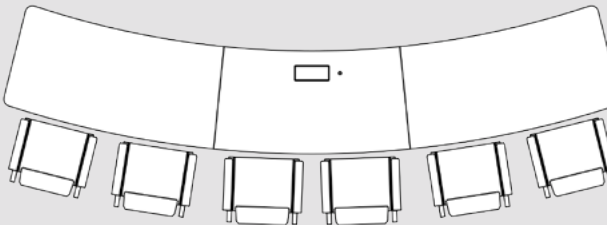
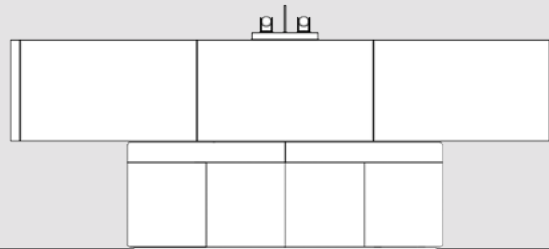
8 pieces of media furniture for 7 rooms, and the perfectly coordinated cooperation of two professionals: Cancom and Holzmedia



1 slim Video wall with 4 x 55" displays for the lobby

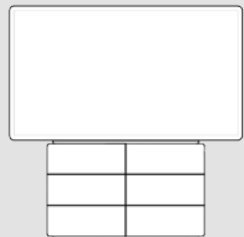


2 Display columns_W7, wall-mounted, with 75" display

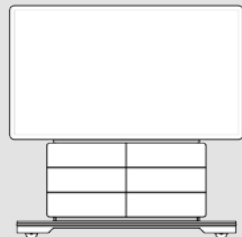


1 customized Media column_W8 M³ with 3 x 65" displays (top)

1 customized, slightly curved Conference table_C12 with cable routing (bottom)



1 height-adjustable Media furniture_S1 XL, wall-mounted, with 84" touch-screen display



1 height-adjustable Media furniture_S1 XL, mobile with floor plate, with 84" touch-screen display



Technology center
Komatsu Germany GmbH

Holzmedia GmbH
Neue Straße 10 · 71576 Burgstetten · Germany
Showroom: Rathausstr. 61 · 71576 Burgstetten
Phone +49 7191 34 47-0 · Fax +49 7191 34 47-90
info@holzmedia.de · www.holzmedia.de

